

By: **The KCC Environment Board**
Alex King, Deputy Leader and Chairman of Climate Change Cabinet Working Group) Peter Gilroy, Chief Executive

To: Corporate Policy Overview Committee 25th September 2009

Subject: A summary of progress in delivery of KCC's environmental commitments including climate change and the implementation of the KCC Environment Policy – 6 Monthly Update.

Classification: Unrestricted

Summary: This paper provides a six monthly update of KCC's progress in fulfilling its sustainability and climate change commitments, including implementation of the KCC Environment Policy and the Kent Environment Strategy.

Recommendation: That Members:

- a. Note and discuss progress to date
- b. Discuss and agree the approach in the best way of engaging Members

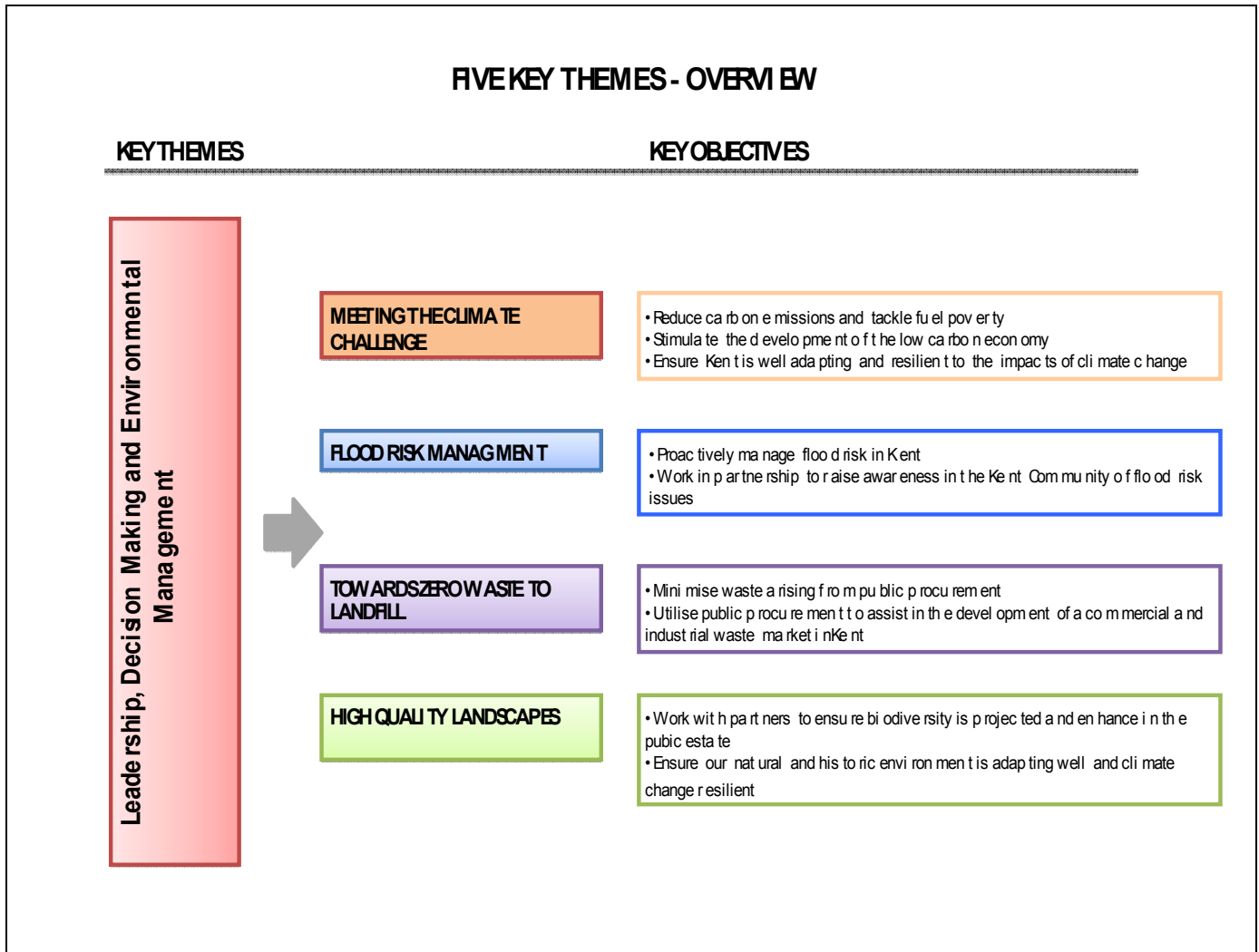
1. Introduction

- 1.1. The KCC Sustainability and Climate Change team are required on behalf of the KCC Environment Board and Climate Change Cabinet Working Group to report to each individual Policy Overview Committee (POC) on a six monthly basis regarding the progress in delivery of KCC's sustainability and climate change commitments, including implementation of the KCC Environment Policy. The last report to this POC was in March 2009 and provided a full summary of progress. This paper updates Members on the significant developments and new initiatives and opportunities since then.
- 1.2. Annex 1 illustrates the key policy and legislative drivers for KCC. A more detailed summary of the policy context can be found in the March 2009 POC Paper. A significant recent development is the launch of the Governments 'Low Carbon Transition Plan' which outlines how the Government is planning to meet its climate change commitments.
- 1.3. KCC's current programme of activity focusing on Five Themes has been informed by our own local priorities as well as national policy and legislative drivers. Five themes underpin our local approach:
 - Theme 1 – Leadership, Decision Making and Environmental Management
 - Theme 2 – Meeting the Climate Challenge
 - Theme 3 – Flood Risk Management
 - Theme 4 – Towards Zero Waste to Landfill
 - Theme 5 – High Quality Landscapes

Figure 1 summarises the current approach.

1.4. There are significant challenges in maintaining momentum on this agenda in the face of the economic recession and a shrinking public purse. Reduction of carbon emissions, as well as ensuring KCC and Kent is well adapting to climate change and primed to take advantage of any emerging low carbon economy opportunities' will remain the main focus of the programme, and indeed is interrelated with all five of the themes.

Figure 1 – Key Themes



2. Significant Developments in 2009

- ISO14001 accreditation – Since the last meeting of this Committee in March, KCC has achieved full accreditation to ISO1400, one of very few County Councils in the UK and certainly the largest. The task now will be to embed the system in decision making processes and mainstream into everyday business, as well as incorporating climate risk priorities.
- Procurement – KCC were successful in winning European funding worth some £400k for its Low Carbon Economy project to support the KCC business supply chain in making environmental efficiency savings and carbon reductions. This project will mean working with Kent businesses to improve their competitiveness and access new business opportunities in an increasingly environmentally aware market and economy.

- The Kent Carbon Hub – with this European funding KCC also has the capacity to develop an online support system to enable businesses to assess their carbon footprint, access additional targeted support and network with other like minded businesses through the use of a ‘Facebook’ style networking tool. The Kent Carbon Hub will help business improve their competitive performance and to show case their achievements and provide signposting to new economic opportunities.
- Kent Local Climate Change Impacts Profile for Kent (LCCLIP) – KCC undertook a broad brush Local Climate Change Impacts Profile (LCCLIP) in 2007, which examined the possible impacts of climate change such as severe weather events on Kent in the coming years. Through accessing funding from Improvement and Efficiency South East (EISE) KCC is now working with all 12 Kent Districts to turn the pilot project into a much more detailed Kent wide approach. KCC are one of only a few authorities taking such a comprehensive, cutting edge approach. The results of the study will be available this autumn.
- Coreflo – Through funding from the Environment Agency, KCC has secured a one year post to work with businesses to help them identify flood risks and prepare for future flooding events to minimise damage and loss of business. This post will be located in KCC but will work very closely with the Environment Agency, Business Support Kent and the Business Link programme.

3. Specific Progress and the Role of the Chief Executive’s Department

- 3.1. The Chief Executive’s Department (CED) continue to play a leading role in driving this agenda forward. The CED Climate Change Programme sits with the wider KCC Sustainability and Climate Change Team in the Environment and Waste Division and is responsible for coordinating the Climate Change Programme for Kent and leading on the Kent Local Climate Change Impacts Profile.
- 3.2. Significant carbon and financial savings continue to be made through the Energy Water Investment Fund (EWIF), in which Laser, Property and Facilities Management play a key role. Powerperfactor voltage reduction technology was successfully installed in Sessions House with predicted 9% reduction in energy usage. Further lighting controls have been installed in Invicta House.
- 3.3. Green ICT - KCC is investing in new data centres and server virtualisation which will deliver considerable energy savings. The uninterruptible power supply and air conditioning in the Sessions House machine room have been replaced to increase capacity to enable the server virtualisation work which will be more energy efficient together with a new, more efficient generator being installed by the end of the year.
- 3.4. BT Meet Me - an initiative designed to increase the use of teleconferencing has been piloted across KCC and will be rolled out this autumn and should provide significant carbon and financial savings.
- 3.5. ISO14001 - CED continues to improve on their progress under the ISO14001 programme and the department is currently developing a number of initiatives which will be reported in the end of year report.

4. Communication and Member Engagement

- 4.1. A formal Corporate Environmental Report linked to the ISO14001 programme is currently being produced and will be put on KNET in the autumn. This document will bring together KCC's overall progress in this area, and set out the next 3 years activity plan.
- 4.2. Specific climate change information and communications can be found on KNET and Kent Connects www.kentconnects.gov.uk/climatechange. A senior decision makers climate change pack has also been produced and will be published on KNET and Kent Connects this autumn.
- 4.3. The KCC Climate Change Cabinet Working Group, comprising Alex King (Chair), Nick Chard (EHW) and Kevin Lynes (E&R) meets as needed, usually on a quarterly or six monthly basis and provides a strong steer to the Climate Change Programme. The Programme as a whole is steered by the KCC Environment Board.
- 4.4. More targeted Member training and engagement initiatives, including the possibility of setting up a broader Member Group, are being considered. Feedback from Members of this Committee on how best to keep Members informed and engaged in this agenda will shape this future work.

5. Conclusion

- 5.1. Kent County Council continues to make good progress towards the implementation of the KCC Environment Policy and achievement of KCC's sustainability and climate change commitments. However, significant challenges do remain, and every effort will be need to maintain momentum and make the step change approach needed if KCC is to continue to deliver on its commitments.

6. Recommendations

Members are asked to:

- a. Note and discuss progress to date
- b. Discuss and agree the best approach for engaging Members in the environmental and climate change agenda.

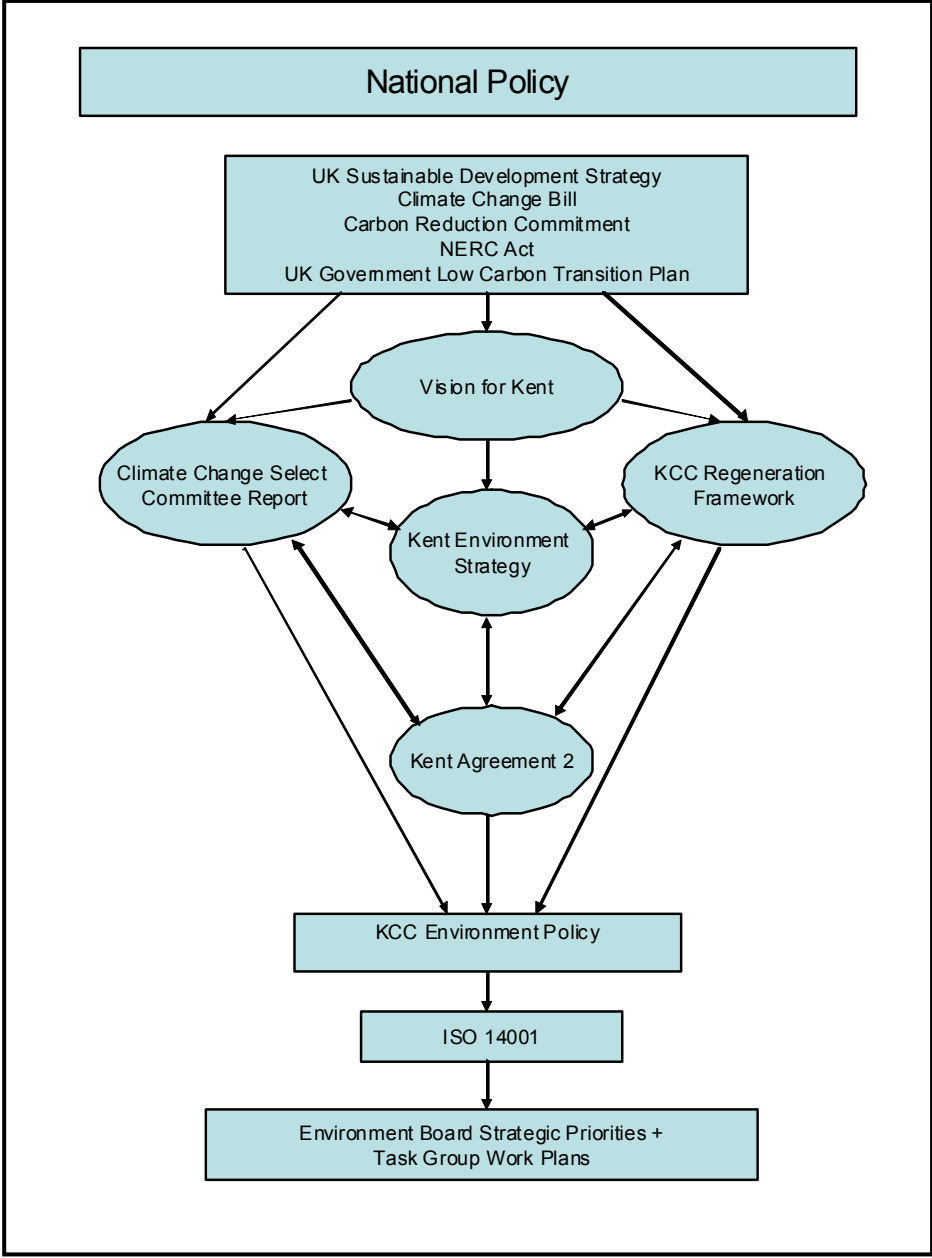
Lead officer contact:

Carolyn McKenzie Extension 1916
Greener Kent Manager
Environment, Highways and Waste

Background Papers:

- CED POC Paper – September 2008, March 2009.

Annex 1: Current Policy and Legislative Context.



Annex 2: KCC's Environment Policy

Kent County Council Environment Policy

At Kent County Council, elected members and staff alike recognise that protection and enhancement of the environment is the key to sustaining a high quality of life in Kent. We recognise that our own activities have an impact on the environment, that we have a responsibility to ensure that these impacts are positive, and that our use of natural resources is minimised.

Our vision

To stabilise and progressively reduce our environmental footprint; to progressively reduce our carbon dioxide emissions and make sure our estate and services are adapted to the future impacts and opportunities of climate change; and to contribute positively to Kent's character, local environmental quality and natural environment

We will do this by applying an evidence led approach to sustainability, identifying the potential for cost savings wherever possible and committing to environmental policies and standards in the following areas:

Our decisions

We will:

- Expect every manager and decision-maker in KCC to demonstrate how they comply with this Policy
- Integrate environmental considerations into our strategic and day-to-day decision-making processes, and give significant weight to them where they conflict with other objectives
- Assess key decisions for their environmental impact, taking a pragmatic whole-life-cost view, and use such assessments to fully inform decision-making
- 'Climate proof' decisions to ensure they reduce our contribution to climate change and help us prepare for the impacts and opportunities of unavoidable climate change, including where appropriate enabling biodiversity and coastal areas to adapt to climate change in line with the KCC Climate Change Action Plan
- Continue to comply with all relevant environmental legislation and statutory duties
- Seek to embrace new environmental technology and methodologies to ensure we are at the leading edge of developments and solutions, within a well-managed risk-analysis and cost-benefit framework

Our estate

We will:

- Reduce energy use within our estate to meet carbon reduction targets of 10% by 2010 and 20% by 2015
- Increase the proportion of the energy needs of our existing estate met from renewable sources
- Reduce water use by 7.5% by 2010 across our estate
- Reduce waste generation across our estate by 10% by 2010, and increase the proportion of our corporate waste which is reused or recycled to 50% by 2010
- Maximise the efficient use of land in our Estate by reusing previously developed land and buildings wherever practical, before using greenfield land.

- Protect, enhance and restore biodiversity, the natural and historic environment within both our buildings and open space, including measures that support climate change adaptation
- Minimise light, noise, air and other forms of pollution arising from our estate
- Ensure KCC-owned highways comply with the relevant parts of this Policy

Our travel and transport

We will:

- Reduce our members and employees' need to travel, including through our estate strategy, locations selected for council events, use of public transport, teleconferencing and other sustainable solutions
- Achieve reductions in total business mileage travelled by employees, encourage greater car sharing and other sustainable solutions, without adversely affecting end-user service delivery
- Promote the use of fuel efficient vehicles and technologies through our vehicle fleet and lease car scheme

Our procurement

We will:

- Increase the proportion of goods and services sourced locally where there are environmental or employment benefits and in compliance with broader UK and EU purchasing legislation
- Work with our suppliers to ensure that they are taking action to reduce the environmental impacts of their businesses
- Identify those goods, including timber and paper, which can be obtained from certified sustainable sources and ensure that these supplies are used
- Work with suppliers to develop markets for environmental technologies, goods and services

Our construction

We will:

- Meet high standards of sustainable construction in all new KCC buildings and refurbishments, and in all developments on KCC-owned land. The BREEAM 'very good'/Code for Sustainable Buildings level 3 or equivalent standard is required as a minimum
- Require all new KCC buildings and refurbishments to assess the feasibility of developing on-site renewable energy to help meet energy needs
- Ensure that our estate and roads are planned and managed in ways which minimise the risk of flooding and do not increase the risk of flooding elsewhere
- Seek to avoid adverse impacts on biodiversity and comply with policy and legislative requirements

Our workforce

We will:

- Ensure that our members and employees understand the implications of environmental legislation and regulation, and exceed minimum environmental standards where possible
- Ensure that environmental awareness is raised and good environmental behaviour encouraged through our corporate training, performance appraisal and reward strategies
- Raise awareness of how to comply with all relevant environmental legislation and statutory duties

Our leadership role in the community

We will:

- Lead Kent's communities to a better understanding of the importance of our environment and help them value and enhance the environment locally and globally
- Set out and deliver a vision of environmental excellence with our partners in the Kent Partnership through regular review and implementation of the Kent Environment Strategy

We will set out detailed action plans and guidance for delivery of these commitments, so that colleagues across KCC have a clear basis for decision-making.

This Policy is owned by the KCC Environment Board who may choose to call decision-makers to account for compliance with these commitments and escalate as necessary to the Leader and Chief Executive. Any proposed exceptions to this Policy will need to provide a sound business case based on whole-life economic, social and environmental costs and benefits.

Kent County Council's Corporate Environmental Performance Group will oversee provision of advice and support, monitoring and reporting. In particular, the Group will lead embedding of these commitments in ISO14001 accreditation for the County Council as a whole by 2010. The Group will report via the KCC Environment Board to the Leader and Chief Executive.



Paul Carter
Leader

Peter Gilroy
Chief Executive

Published December 2007. This Policy and its successful implementation will be reviewed annually by the KCC Environment Board, escalating any changes as necessary to the Leader and Chief Executive.